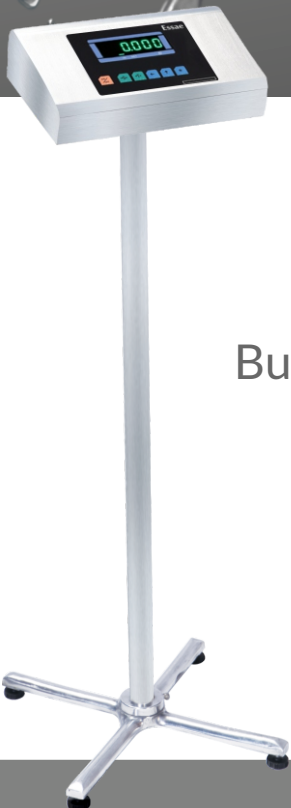


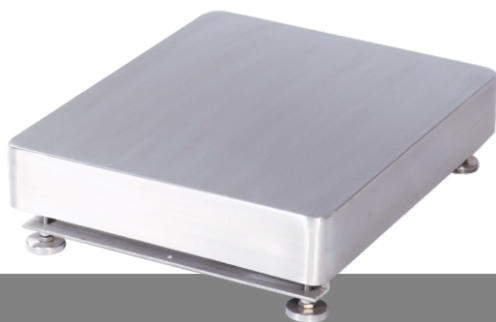
DX-451HP/DF-451 Series

Bench Scale / Platform Scale

Essae[®]
...for Excellence



Built to perform for any Industrial Applications



Technical Specifications

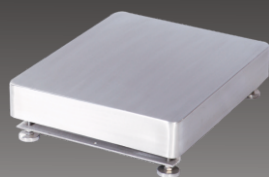
Model	Capacity (kg)	Accuracy (g)	Platform size (mm)
DX-451HP/ DF Bench Scale	6/15/30	0.5/1/2	360 x 280
DX-451HP/ DF Single Load cell platform	6/15/30	0.5/1/2	400 x 400
	50/60/100/150	5/5/10/10	450 x 550
	100/150/300	10/10/20	550 x 650
	300/600	20/50	700 x 800
DX-451HP/ DF Four Load cell platform	600/1000/1500	100/200/200	1000 x 1200, 1200 x 1500
DX-451HP/ DF Low Profile platform	150/300/600	20/50/100	600 x 600, 850 x 850
	600/1000/1500	100/200/200	1250 x 1250, 1500 x 1500

* Pole & cross stand not applicable for DF Series
Check technical spec doc for further info

Salient Features

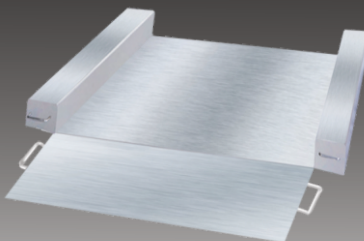
- Fully Stainless Steel (SS-304)
- IP-67 SS Indicator and IP-67 Tool Steel Load cell
- Heavy duty metal shielded cable for indicator
- Eco-friendly 14 mm bright Green LED Display
- IP-65 FLP indicator (DF-451)

SINGLE LOAD CELL PLATFORM



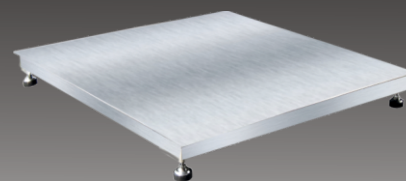
- Wash down construction complies with GMP
- Ideal for Pharma, Chemical and Food processing industry

LOW PROFILE PLATFORM



- Low profile height is 45 mm \pm 5 mm (600 x 600, 850 x 850)
- Low profile height is 60 mm \pm 5 mm (1250 x 1250, 1500 x 1500)
- Ease of movement of Container / Trolley

FOUR LOAD CELL PLATFORM



- Wide range of platforms to suit higher capacity
- Rugged / Sturdy platform

Bench Scale



- Stainless Steel housing ensures long life in harsh environments

DF-451 Flame Proof (FLP) Console



- IP-65 Flame Proof console for hazardous area
- Gas Group : II A, II B and Zone 1 & Zone 2

Factory Options

- RS-232 Interface
- Virtual COM port (USB)
- 4-20 mA digital output
- Internal Set point - TTL O/P

Accessories

- Jumbo Display
- Printer *
- SS Ramp
- External set point - relay output *
- EQDF file
- RS-232 to USB cable
- *Not for FLP

Essae-Teraoka Pvt. Ltd.

Your Essae representative

DEEPAK ELECTRONICS

**Near Railway Station,
Garhi Harsaru, Gurgaon**

9718298952, 9212559709

Note: The above model meets the statutory and regulatory requirements as per the provision of legal metrology Act 2009 and legal metrology (General) Rule, 2011. Specifications are subject to change without notice. Other names and logos used are property of respective brands.

Form No. : CAT-DX-451HP-086 R01